

# We know YOU are... but is your WORK SPACE ready?

Full range of custom designed and manufactured protective and preventative office, factory and work wear solutions.

Implement today and continue to work with peace of mind.

Direct your staff and customers in safe practice.

1. WORK WEAR
2. WORK SPACE
3. WORK NOTICES

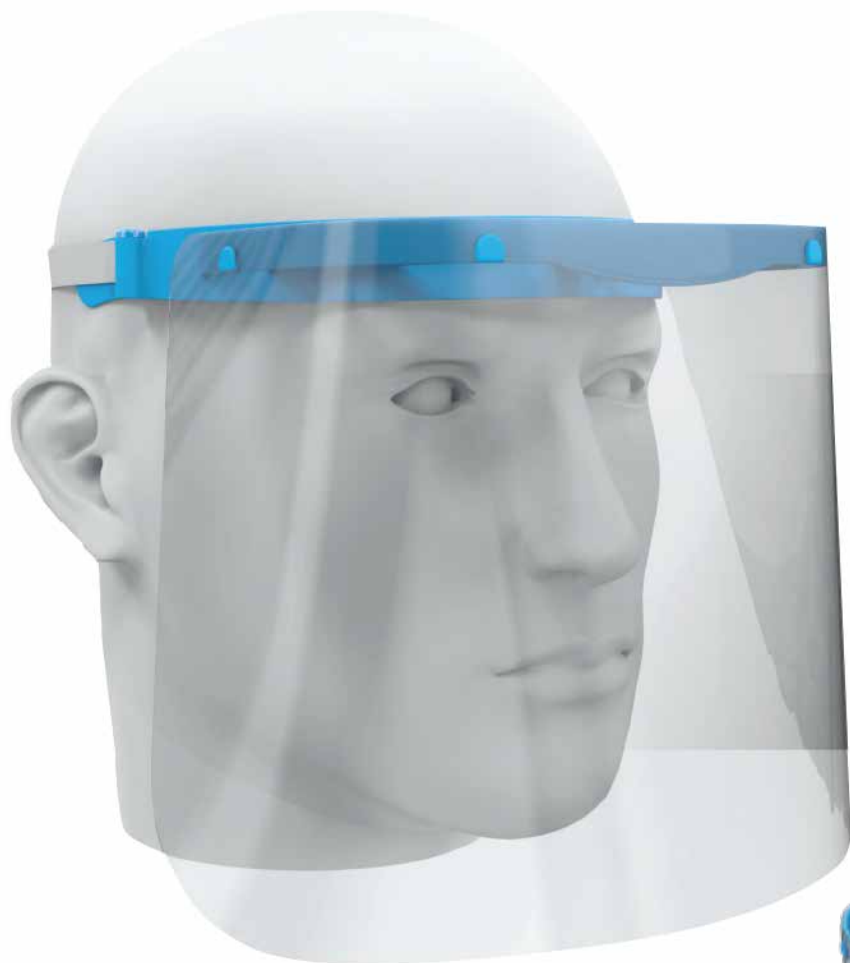




FACE MASKS

FACE SHIELDS





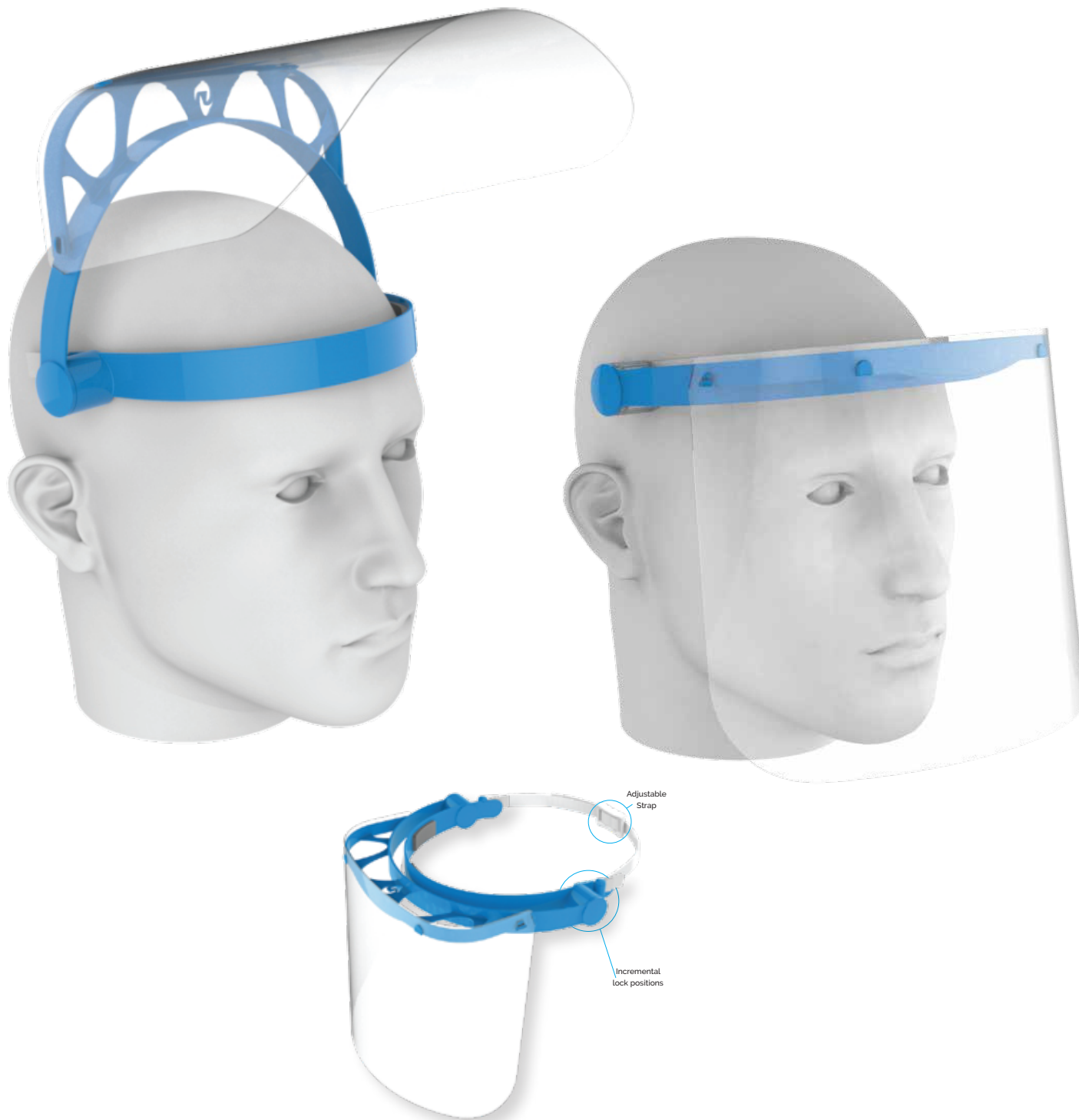
**FIXED**  
with strap

## FEATURES:

- High quality materials
- Fully adjustable
- Complete face protection
- Comfort design with foam pads
- Optically clear shield
- Easy breathing

Colour options





# FLIP - UP

with adjustable strap

## FEATURES:

- High quality materials
- Fully adjustable
- Complete face protection
- Comfort design with foam pads
- Incremental lock positions
- Optically clear shield
- Easy breathing

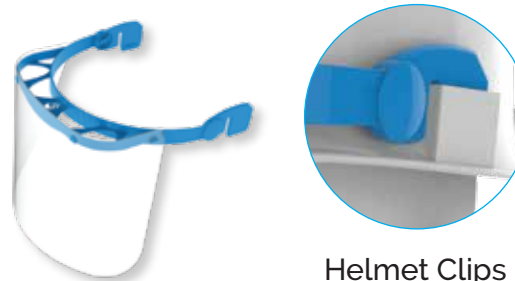
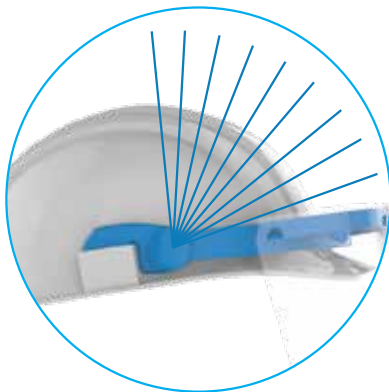
Colour options







Lock Positions



Helmet Clips



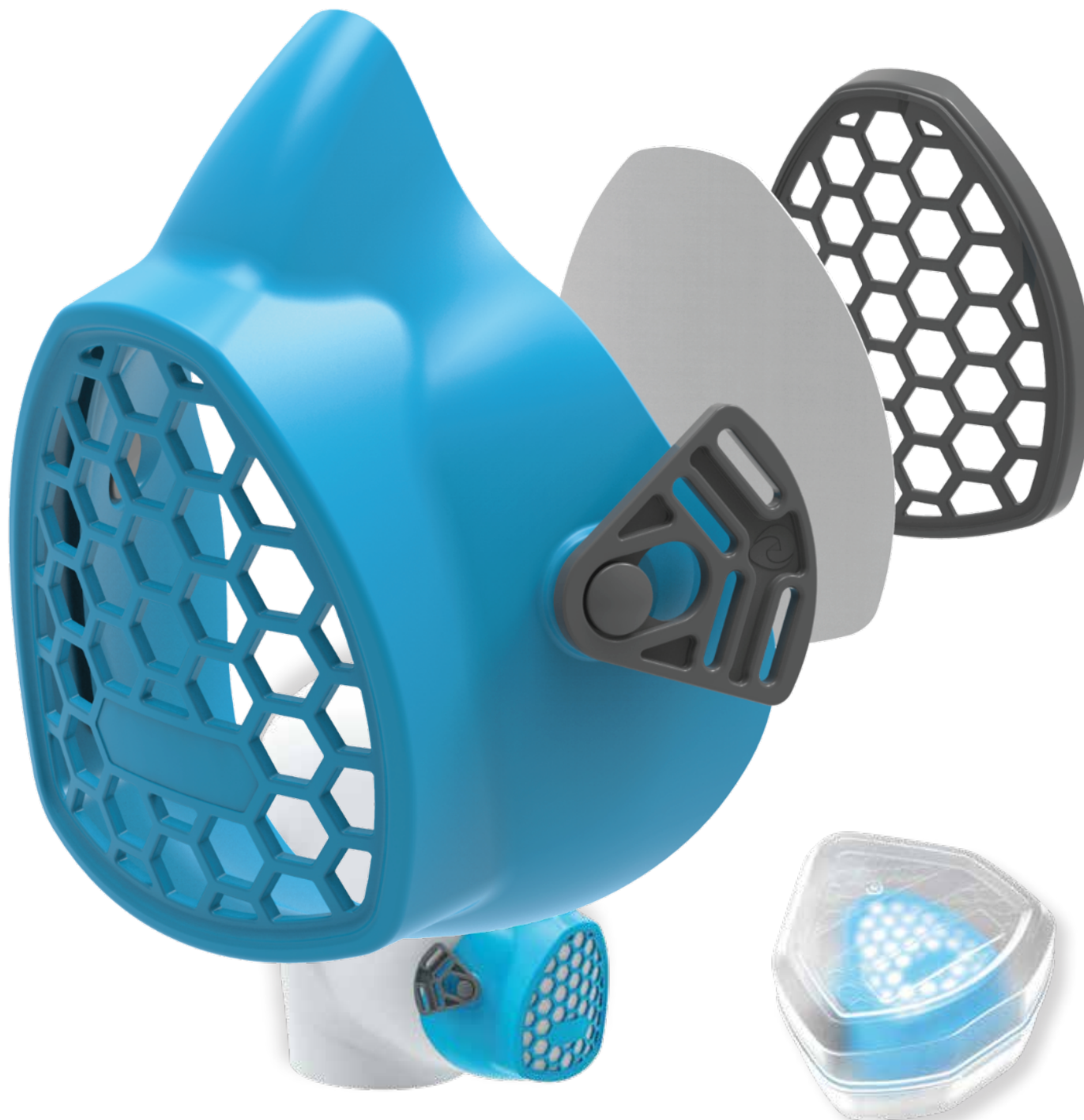
## FLIP - UP with helmet clips

### FEATURES:

- High quality materials
- Fully adjustable
- Complete face protection
- Comfort design with foam pads
- Incremental lock positions
- Optically clear shield
- Easy breathing

Colour options





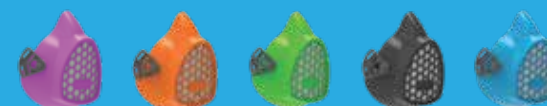
# REUSABLE FACE MASK with filter & container

**PRE-ORDER NOW**  
**DELIVERY - 2 WEEKS**

The SaniMask reusable is comfortable and ergonomically designed.

Each unit comes with 10 filters and a mask sterilisation container which is suitable for microwaving. Additional filters can be purchased separately.

**Colour options**





## CLIP & GO FACE SHIELD

### FEATURES:

- 1 mm UHI Acrylic
- Impact resistant
- Optically clear
- Anti-fog strip
- Fits most eye-ware



## CLIP ON SITE

### FEATURES:

Safety helmet shield

Clips to most safety helmets

Lightweight & optically clear

Available in:

Light Duty

Medium Duty

Heavy Duty





**DISPENSERS**

**SANITIZERS**





# DISPENSER

## FEATURES:

- Foot operated
- Mild steel construction
- Powder coated
- Dispenser optional
- Liquid or spray
- Brand-able to requirement

## FEATURES:

- Wall mounted
- Spray mist
- 500ml Container
- Robust design



## DISPENSER H O L D E R

### FEATURES:

Wall mountable

2 mm Mild steel

Powder coated

Fits standard 500ml pump

(Pump, bottle & liquid excluded)

Available on request



## HAND ALCOHOL

### **SIZES:**

100ml

500ml

5 Litre

25 Litre



COUNTER SHIELDS

DESK SHIELDS

FREE STANDING  
SHIELDS







# COUNTER SHIELD

Presenting an additional layer of defense in the fight against Covid-19 by providing a physical protective shield between work spaces.

COUNTER SHIELD is an optically clear, Ultra High Impact protective shield that can be mounted on any work surface with ease.

## FEATURES:

1. Fits most desk systems
2. Custom sizes available
3. Quick, peel & stick design
4. No drilling, mounting or additional fitting required
5. Locally manufactured
6. Quick project turnaround

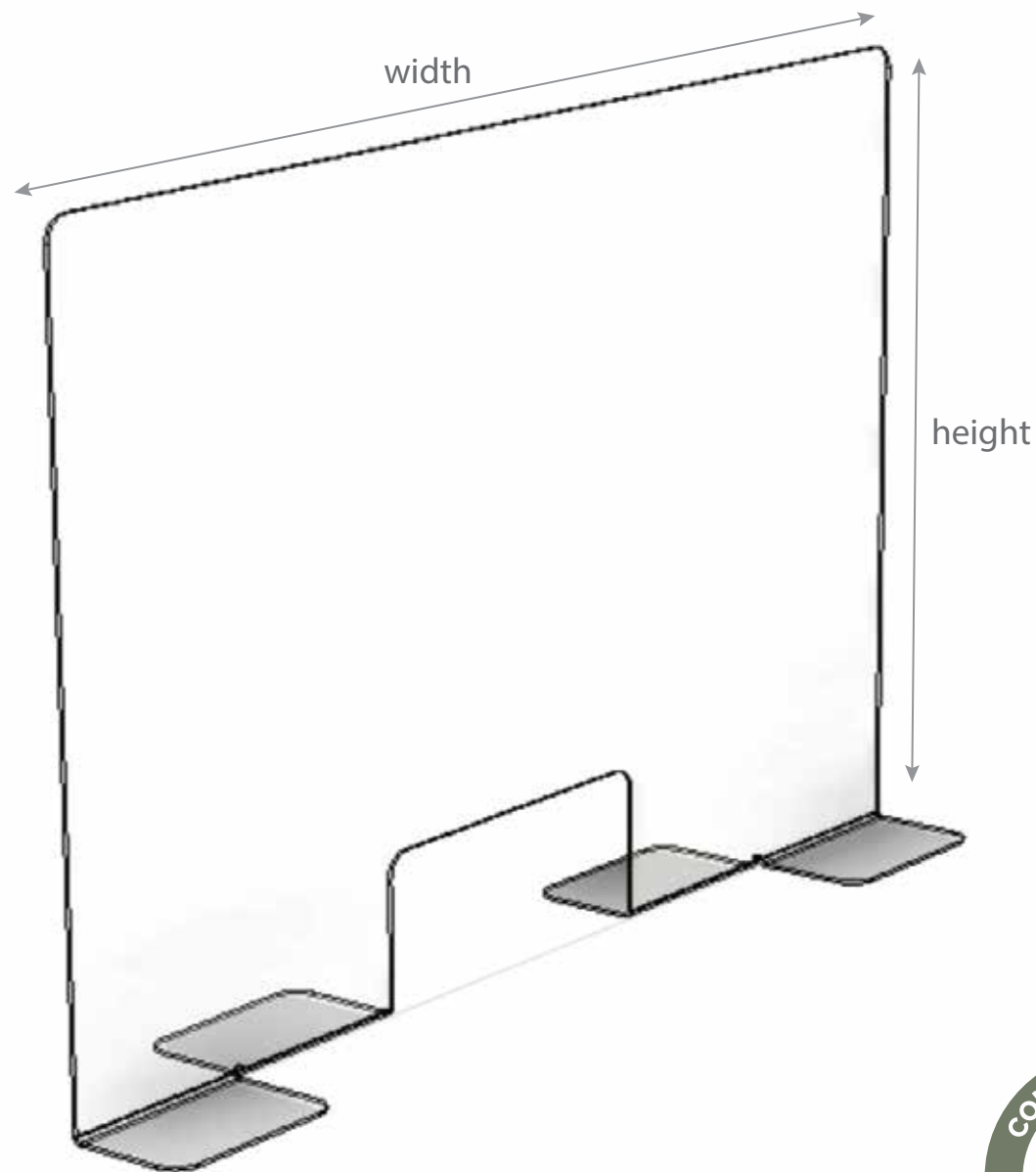


# STANDING SHIELD

STANDING SHIELD is an optically clear, Ultra High Impact protective shield that can be used in any work area with ease.

## FEATURES:

1. 5mm MI Acrylic
2. Custom sizes available
3. Free standing
4. No drilling, mounting or additional fitting required
5. Locally manufactured
6. Quick project turnaround

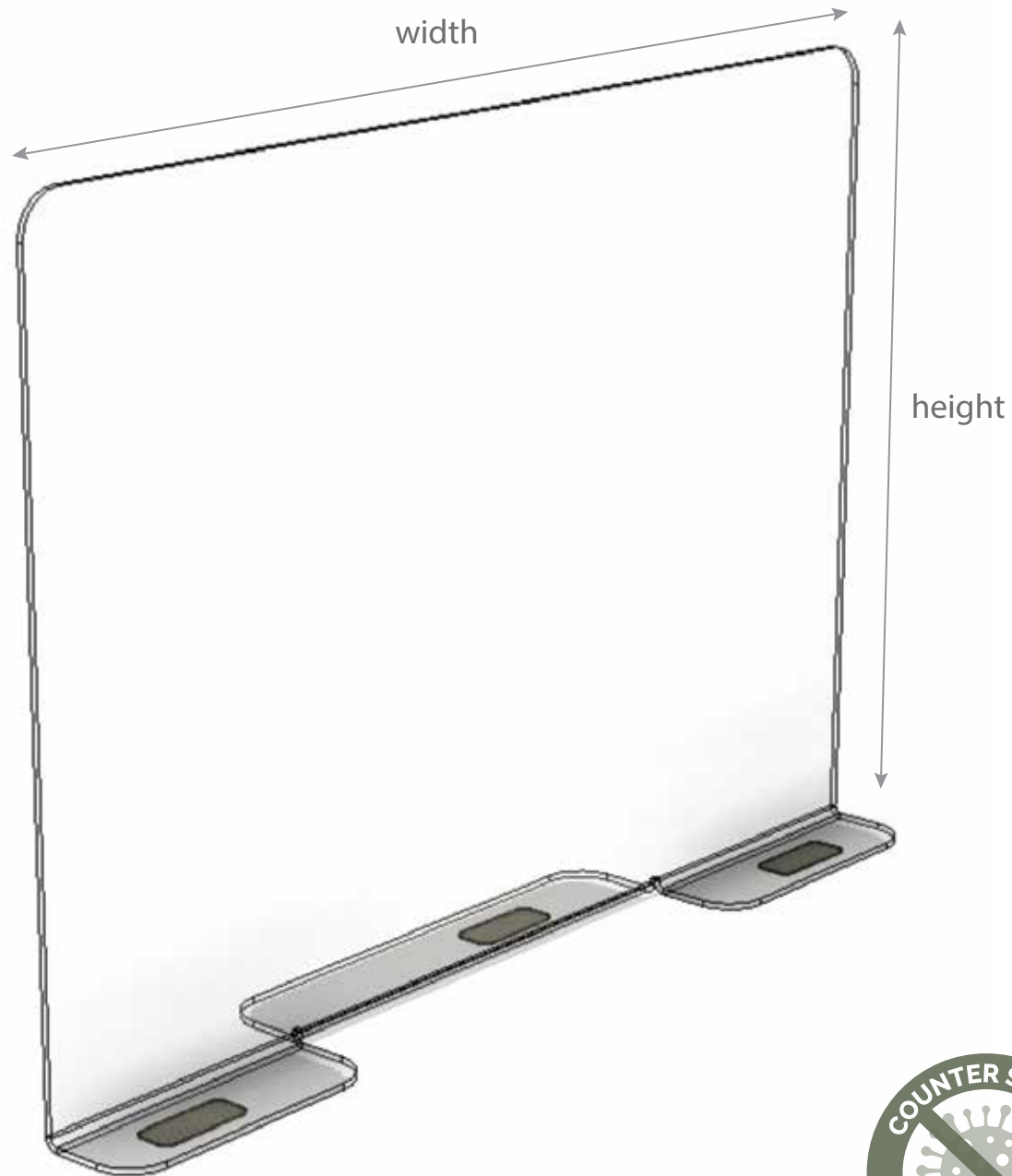


## COUNTER SHIELDS

### FEATURES:

3mm MI Plexiglas  
Peel & Stick functionality  
Pass-through slot  
Optically clear

600 x 660/800mm  
800 x 660/800mm  
1000 x 660/800mm  
1200 x 660/800mm  
1600 x 660/800mm  
1800 x 660/800mm



## DESK SHIELDS

### FEATURES:

3mm MI Plexiglas

Peel & Stick functionality

Optically clear

600 x 660/800mm

800 x 660/800mm

1000 x 660/800mm

1200 x 660/800mm

1600 x 660/800mm

1800 x 660/800mm



## BRACKET SHIELDS

### FEATURES:

5mm MI Acrylic

Mild steel brackets & clamps  
for attachment

For use on counter or desk

Optically clear

660 x 600mm

660 x 800mm

660 x 1000mm

660 x 1200mm

660 x 1400mm

660 x 1600mm

660 x 1800mm







**SAFETY NOTICES**

**DISTANCE PROTOCOL**

**PREVENTION SIGNS**



## OFFICE SIGNAGE

### FEATURES:

1mm ABS Backing  
Digitally printed  
Peel & stick application  
Sizes: A0, A1, A2

All notices can be adapted and designed with choice of message, theme and corporate identity if required.



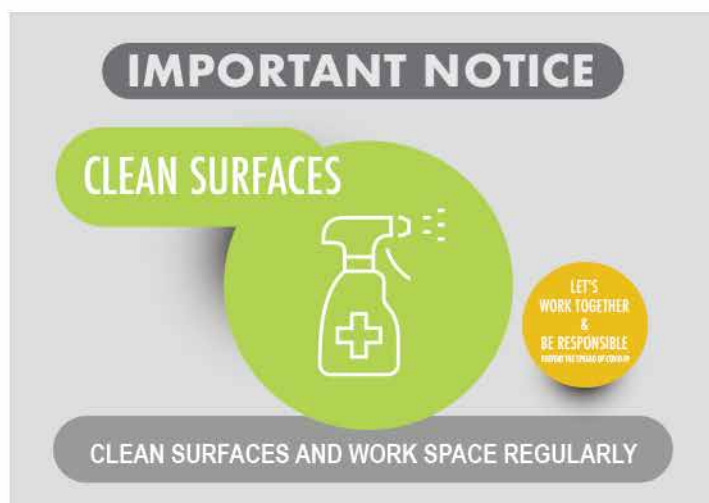
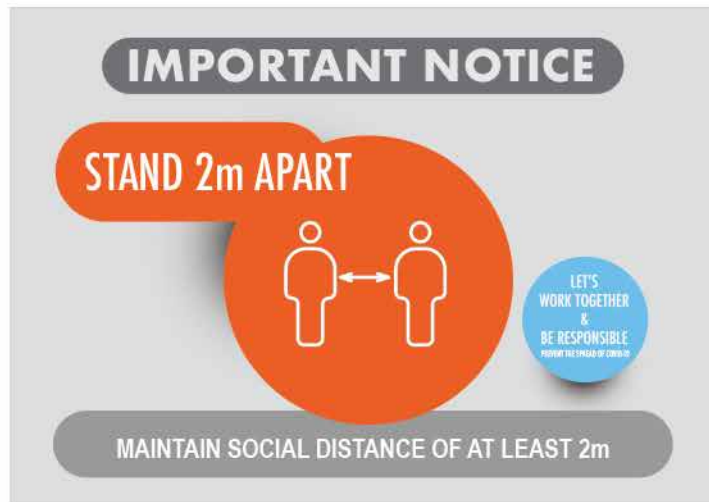


# OFFICE SIGNAGE

## FEATURES:

1mm ABS Backing  
Digitally printed  
Peel & stick application  
Sizes: A0, A1, A2

All notices can be adapted and designed with choice of message, theme and corporate identity if required.







# ON-SITE & INDUSTRIAL SIGNAGE

## FEATURES:

1mm ABS Backing  
Digitally printed  
Peel & stick application  
Sizes: A0, A1, A2

All notices can be adapted and designed with choice of message, theme and corporate identity if required.



## SAFETY FIRST

**MASKS REQUIRED  
BEYOND THIS POINT**



**PREVENT THE SPREAD  
OF CORONAVIRUS**

## SAFETY FIRST

**PLEASE USE SANITISER  
BEFORE ENTRY**



**PREVENT THE SPREAD  
OF CORONAVIRUS**

## SAFETY FIRST

**FOLLOW PROTOCOL**



**PREVENT THE SPREAD  
OF CORONAVIRUS**

## SAFETY FIRST

**PRACTICE SAFE  
SOCIAL DISTANCE**



**PREVENT THE SPREAD  
OF CORONAVIRUS**



# WORKSHOP SIGNAGE

## FEATURES:

1mm ABS Backing, Digitally printed

Peel & stick application

Sizes: A0, A1, A2

All notices can be adapted and designed with choice of message, theme and corporate identity if required.





## WORKSHOP SIGNAGE

### FEATURES:

1mm ABS Backing, Digitally printed

Peel & stick application

Sizes: A0, A1, A2

### A-FRAME

3mm ABS Structure

Digitally printed

Free standing

Sizes: A1