



**PRIME CORP**  
brand engineers

# **SARS-CoV-2 COVID-19 Prevention Catalogue**

## **PrimeCorp (Pty) Ltd**

Longlake Edge Logistics Park  
Unit E6, Daventry Lane,  
Klipfontein 12-lr, Lethabong,  
Johannesburg, 1609

**Tony:** [tony@primecorp.co.za](mailto:tony@primecorp.co.za) - 083 453 4760

**Philippe:** [philippe@primecorp.co.za](mailto:philippe@primecorp.co.za) - 082 852 5783

**Alexi:** [sales@primecorp.co.za](mailto:sales@primecorp.co.za) - 082 920 4373

Co Reg# 2015/426360/07

Vat# 4180274682

# Sanitation Tunnels

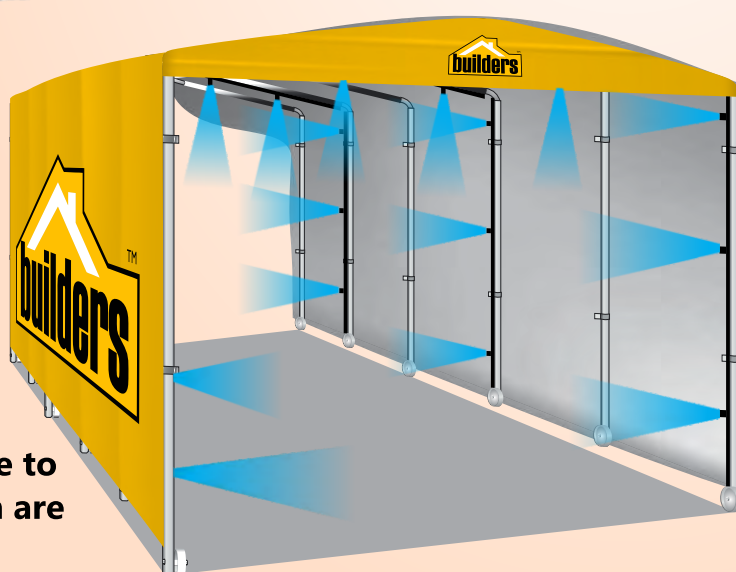
Together we face a serious world health emergency. To help in this turbulent times, we have decided to make available our company's wealth of expertise and time.



We have been manufacturing and exporting gazebos, banners, flags and mobile tunnels to businesses worldwide for over 30 years.

The serious global situation has led us to create a solution that can be of public value: **a sanitation tunnel with an integrated, mist system to help against germs and bacteria.**

**The tunnel contains the liquid spray inside to effectively saturate the environment. In this way it is possible to sanitize all surfaces even those which are not directly exposed to the nozzles.**



## TECHNICAL SPECIFICATIONS

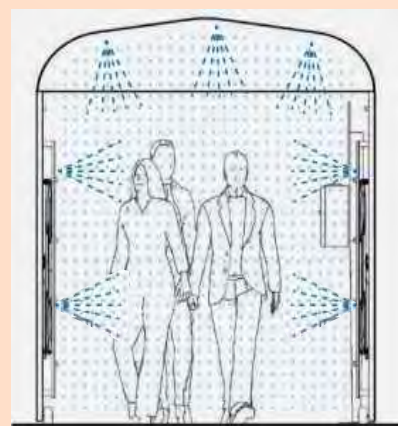
- **Frame:** -Heavy duty aluminium frame in 3m long by 2.1m high by 1m wide.
- **Material Cover:** -Fully printed water resistant dye sublimated fabric.
- **Misting System:** -1x Vacuum suction pump, 20m of PVC piping  
-Spray nozzles for full coverage  
-Motion activation sensor
- **Weight:** -Flat packed weight 1m Tunnel = +- 36kg
- **Packaging:** -1 Fabric flat packed bag 2.5m x 1.5m x 0.3m
- **Additional equipment:** -120 litre JoJo tank  
- Rubberised flooring 2m x 1m  
- Maintenance contract

## HOW IT WORKS

The tunnel creates an obligatory passage and is equipped with, internal arc-shaped nozzles that saturates the environment but preventing dispersions. Maximum 2 people per pass at least 1m from each other. Can be used for people, goods and cars.

## WHAT WE PROVIDE

A fully **MOBILE BRANDED**, assembled and ready to use tunnel equipped with mist system. The tunnel is manufactured using a high grade aluminum structure that is able to be flat packed for storage and transport.

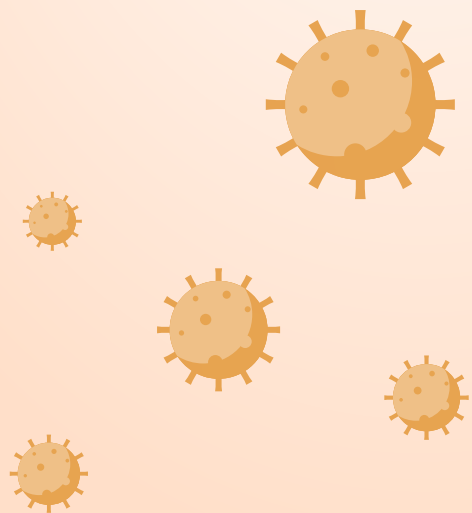


- PRIME-COVID-1001 - 3m Sanitation Tunnel - R20 000ea
- PRIME-COVID-1002 - 6m Sanitation Tunnel - R22 850ea
- PRIME-COVID-1003 - 10m Sanitation Tunnel - R36 900ea
- PRIME-COVID-1004 - 20L Sanitation Liquid - R899ea

All prices exclude VAT



**PRIME-COVID-1005**  
300ml Hand Sanitizer  
70% alcohol content



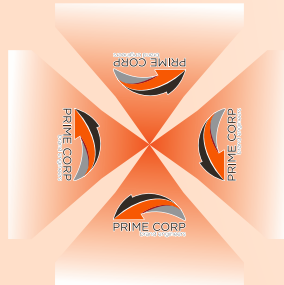
**PRIME-COVID-1006**  
300ml Hand Sanitizer  
4 x sublimated reusable 3-layer face masks  
All packed in branded drawstring cord bag



All prices exclude VAT

### PRIME-COVID-1007 - Square Gazebo - R9900.00ea

Can be used as: Testing Station/Change Room/Storage Room



OPTIONAL  
-Walls to have PVC windows  
-Wall to have zips to act as a door entrance

2.8m x 2.8m Square Gazebo With 4 Sides (Zip Door)  
STYLE High peak pyramid roof with valance  
CONSTRUCTION Aluminium frame, PVC connectors  
LEG UNITS 2 Aluminium sliding parts  
ROOF CLEARANCE 2.1m  
PACKAGE SIZE 1700 x 280 x 280mm  
STORAGE HEIGHT 1.65m  
WEIGHT 24kg

Gazebo options are all custom made, water proof & UV resistant. Quick setup with velcro side walls. High quality printed fabrics with strong frames and quick pickup  
This artwork is for visual purposes only



### PRIME-COVID-1008 - Rectangular Gazebo - R16 500.00ea

Can be used as: Patient Room/Testing Station/Change Room/Storage Room/Sleeping Area



OPTIONAL  
-Walls to have PVC windows  
-Wall to have zips to act as a door entrance

2.8m x 5.7m Rectangular Gazebo With 4 Sides (Zip Door/ Fits A Bed Inside)

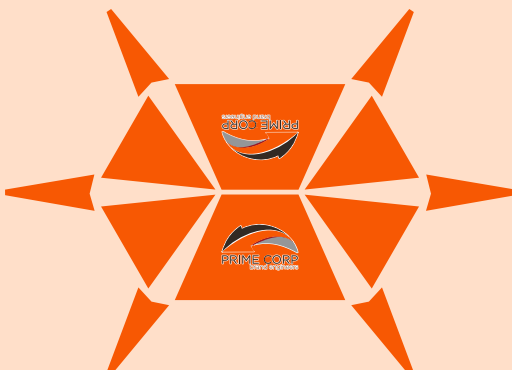
STYLE High peak pyramid roof with valance  
CONSTRUCTION Aluminium frame, PVC connectors  
LEG UNITS 2 Aluminium sliding parts (6 legs)  
ROOF CLEARANCE 2.1m  
PACKAGE SIZE 1700 x 450 x 280mm  
STORAGE HEIGHT 1.7m  
WEIGHT 45kg

Gazebo options are all custom made, water proof & UV resistant. Quick setup with velcro side walls. High quality printed fabrics with strong frames and quick pickup  
This artwork is for visual purposes only



### PRIME-COVID-1009 - Star Tent - R10 500.00ea

Can be used as: Large scale testing station/Large covered assembly area/VOC Cover/Homeless cover



6 x 9m Star Tent

Simple setup, two people can put this up

STYLE High peak pyramid roof

CONSTRUCTION Aluminium poles

LEG UNITS 60mm double pole

This product has a waterproof heavy duty top tensioning system (cam buckle type)

Two stage aluminium inner pole adjusting system allows the unit to be put flat on the ground or up - allowing ventilation

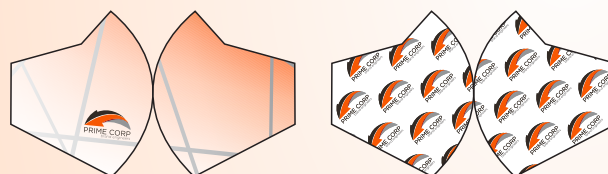
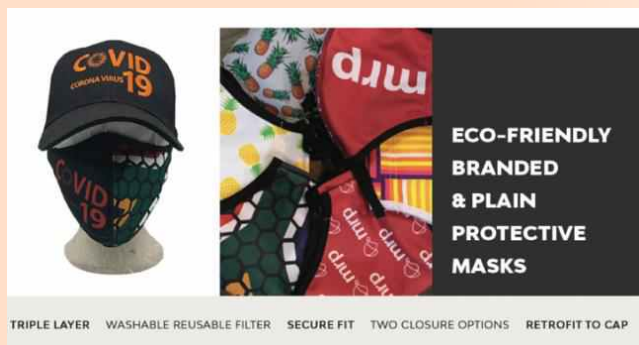
The size is determined by the exact size that the top covers over the ground and not the end webbing tie downs as other companies quote.



All prices exclude VAT



**PRIME-COVID-1010**  
**R33.00ea unbranded** (50 units minimum order)  
**R39.00ea branded** (50 units minimum order)  
 Reusable Facemasks



**Washable Masks and Washable Reusable Approved Filter**  
 Increase protection by using one of our removable, washable fibertex inserts in the mask pocket. Various filters can be used in the pocket - including medical grade.



**Triple Layer**

Made from two layers of 200 GSM POLYESTER fabric. Each mask comes with one fibertex insert. Additional inserts can be purchased separately.

**Secure Fit**

The front of the mask is made in two segments, ensuring a snug secure fit and comfort.

**Two Closure Options**

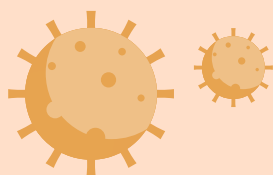
The mask as two elastic straps with an adjustable toggle or can be retrofit to attach to headwear.

**Retrofit to Cap**

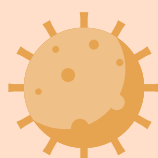
Ask us for more information on our retrofit caps, to make wearing your mask, comfortable and easy!

**Brand it!**

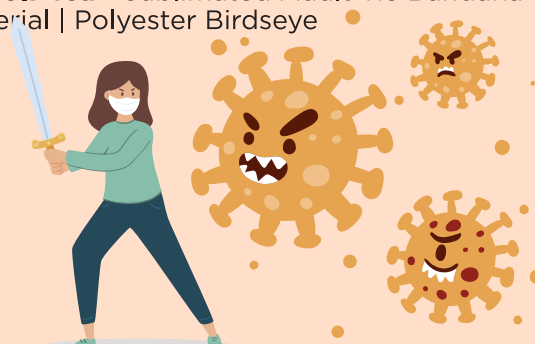
Plain colour options as well as sublimation print of any design, colour or brand!



**PRIME-COVID-1011**  
**R39.00ea unbranded**  
**R47.50ea branded**  
 PVC Face Shields



**PRIME-COVID-1012A - R19.99ea** - Unbranded Adult Multi-Function Tubular Buff Size | 230(w) x 480(w) Material | Polyester Interlock  
**PRIME-COVID-1012B - R29.69ea** - Sublimated Adult Multi-function Tubular Bandana Size | 230(w) x 480(w) Material | Polyester Interlock  
**PRIME-COVID-1012C - R30.74ea** - Sublimated Adult Tie Bandana Size | 680(w) 680(h) Material | Polyester Birdseye



All prices exclude VAT

# Social Distancing Queuing & Signage Solutions



## PRIME-COVID-1013 - Retractable Belt Barrier

Post With A Black Base Cover - R1250.00per unit

Belt Double Sided Full Colour Printing - R231.00per unit (Minimum Print is 15units)

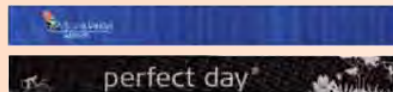
### Post Colours



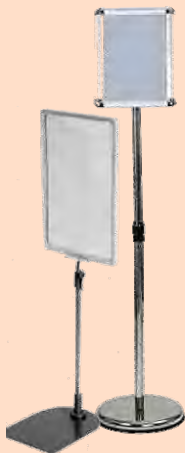
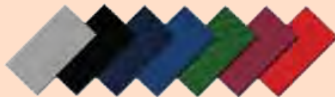
Technical Specifications:	
Total Weight (Approximately)	12 kg
Base Weight (Approximately)	9 kg
Material	Aluminium
4-Way Belt Connection	yes
Rubberised Base	yes
Belt End Safety Lock	optional
Signage	A4/A3
Belt Colours	Grey/Black/Navy Blue/ Royal Blue/Forest Green/ (Burgundy/Red)



### Digital Branding



### Belt Colours



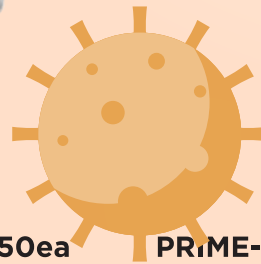
## PRIME-COVID-1014 - R390ea

A4 Signage holder with base



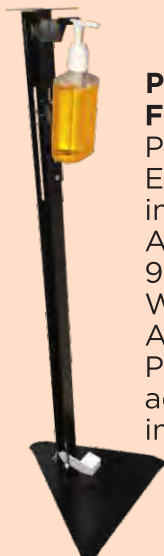
## PRIME-COVID-1015 - R150ea

A4 Signage holder with clip



## PRIME-COVID-1016 - R90ea

Poster holder with clip



## PRIME-COVID-1017 - R895.00ea

### Foot Pump Sanitizer Stand

Packed flat to make it easy to transport  
Easy to assemble (assembly manual included)

Assembled size - Base 300x300mm and 930mm high

Weight is 2.6kg per unit

Available in powder coated black

Preferred 1l sanitizer bottle size but can be adjusted to take other sizes. (sanitizer not included).



All prices exclude VAT



# Awareness Display Options \*various designs available



**PRIME CORP**  
brand engineers

**PRIME-COVID-1018 - 3x3m Banner Wall - R3888ea**

**CORONAVIRUS COVID-19**

**Prevent the spread**  
As with any infectious disease, the best way to prevent it is to practice proper hygiene.

- Keep the workplace clean and hygienic.
- Promote regular and thorough hand washing.
- Wear a face mask.

**Symptoms**

- Sore Throat
- High Fever
- Dry Cough
- Shortness of Breath
- Shaking
- Chills
- Headaches

If you experience any symptoms, isolate yourself and contact your physician.

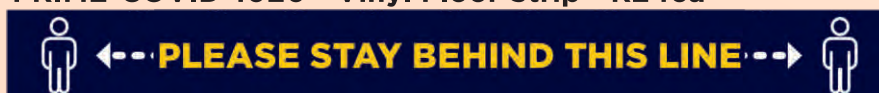
Learn more on how to be SAFE - [www.sacoronavirus.co.za](http://www.sacoronavirus.co.za)  
COVID-19 Hotline: 0800 029 999 or Whatsapp 'Hi' to 060 012 3456

**PRIME-COVID-1019 Pull-up Banner - R648ea**

**CORONAVIRUS**  
Help prevent the spread of COVID-19

- KEEP YOUR DISTANCE**  
Keep a safe distance of 2 metres away from other people.
- WEAR A FACE MASK**  
Wear a face mask when out in public.
- WASH YOUR HANDS**  
Wash your hands thoroughly with soap and water for at least 20 seconds.
- USE A HAND SANITISER**  
If you do not have access to soap and water, use an alcohol-based hand sanitiser to disinfect your hands.
- SHOWING SYMPTOMS**  
If you are showing symptoms of COVID-19, isolate yourself and call your physician. You can also call the COVID-19 hotline 0800 029 999 or send 'Hi' to 060 012 3456 on whatsapp.

**PRIME-COVID-1020 - Vinyl Floor Strip - R24ea**



**PRIME-COVID-1021 - A2 Posters (Set of 3) - R46ea**

**PRIME-COVID-1022 - A1 Posters (Set of 3) - R65ea**

**PRIME-COVID-1023 - A0 Posters (Set of 3) - R117ea**

**PRIME-COVID-1021 - 30cm Floor Stickers (Set of 3) - R85**

**HOW TO WASH YOUR HANDS**

- Wet your hands
- Apply soap
- Rub hands palm-to-palm
- Scrub between your fingers
- Clean thumbs
- Clean under your fingernails
- Wash your wrists
- Rinse your hands
- Dry with a single-use towel

Learn more on how to be SAFE - [www.sacoronavirus.co.za](http://www.sacoronavirus.co.za)  
COVID-19 Hotline: 0800 029 999 or Whatsapp 'Hi' to 060 012 3456



All prices exclude VAT